

# TRI MO

ARCHITECTURAL  
SOLUTIONS

## INTRODUCTION

With exceptional technical characteristics and the perfect visual expression, Trimo façade systems easily adjust to your vision of space.

- Unique and functional solutions with a long-life span.
- State-of-the-art technical characteristics.
- Certified quality.
- Reduced construction time
- Excellent fire performance, noise and thermal insulation.
- Attractive appearance through a wide selection of colours and shapes.

### Trimo 's range of metal façade systems:

- Qbiss One - Prefabricated architectural façade system.
- Qbiss Screen - Innovative metal rainscreen system.



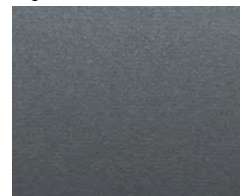
## SPECIAL METALLIC



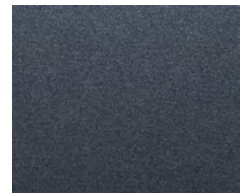
Silver



Light Silver



Dark Silver



Light Graphite



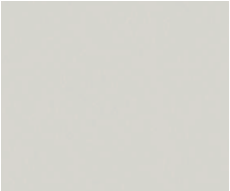
**SOLID COLOURS**



White



Basalt Grey



Grey White



Sapphire Blue



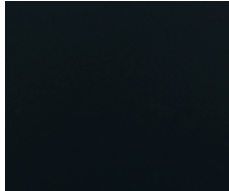
Light Grey



Traffic Red



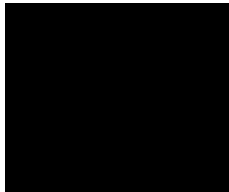
Cream



Anthracite



Bright Yellow



Black



**COLORCOAT PRISMA® ELEMENTS\***



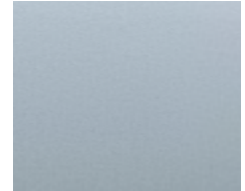
Sirius Sparkle



Seren White



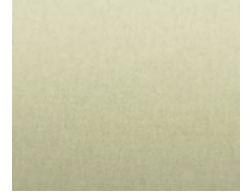
Orion Sparkle



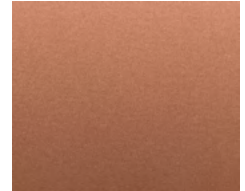
Seren Silver



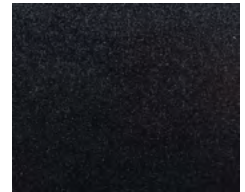
Zeus Sparkle



Seren Gold



Seren Copper



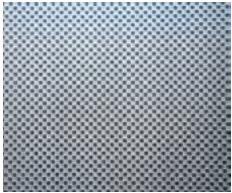
Seren Black

\*Colorcoat Prisma and Seren are trademarks of Tata Steel UK Limited

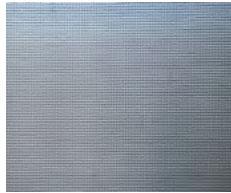


## BESPOKE SOLUTIONS AND MATERIALS

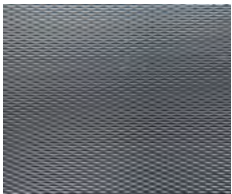
On a project by project individual basis Trimo can provide a bespoke solution of Qbiss facades from STAINLESS STEEL in imitation of Corten, Copper, Wood, Stone etc. in order to preserve the longterm value of the building and provide a unique architectural solution & appearance. Availability and application shall be discussed with Trimo technical department.



Quadro Lucido



Dots Lucido



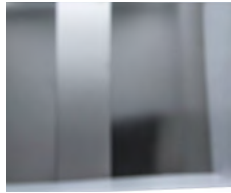
2WL Lucido



5WL Lucido



Pelle Lucido



Shiny Mirror

## COLOUR REFERENCE TABLE

### Special Metallic

TRIMO COLOUR	NEAREST RAL OR OTHER REFERENCE COLOUR
SILVER	RAL 9006
LIGHT SILVER	N/A
DARK SILVER	RAL 9007
LIGHT GRAPHITE	N/A

### Solid colours

TRIMO COLOUR	NEAREST RAL OR OTHER REFERENCE COLOUR
WHITE	RAL 9010
GREY WHITE	RAL 9002
LIGHT GREY	RAL 7035
CREAM	RAL 1015
BRIGHT YELLOW	NCS S 1070 Y10R
BASALT GREY	RAL 7012
SAPPHIRE BLUE	RAL 5003
TRAFFIC RED	RAL 3020
ANTHRACITE	RAL 7016
BLACK	RAL 9005

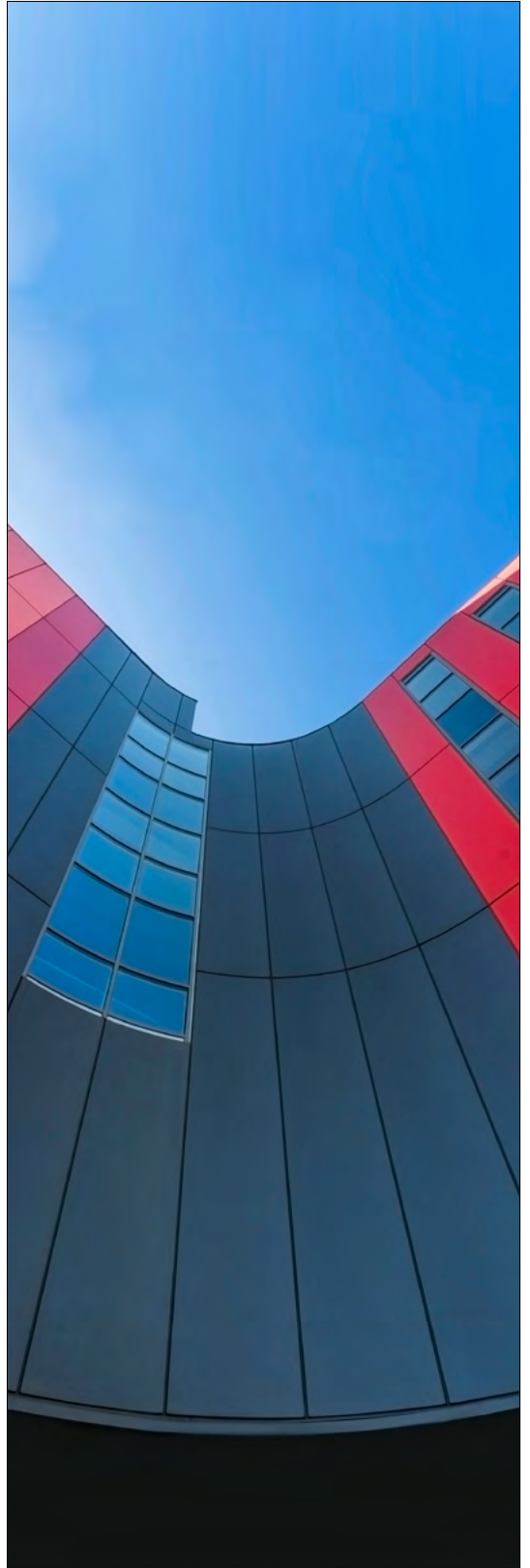
### Colorcoat Prisma® Elements\*

TRIMO COLOUR	NEAREST RAL OR OTHER REFERENCE COLOUR
SIRIUS SPARKLE	[Colorcoat Prisma® COLOUR]
ORION SPARKLE	[Colorcoat Prisma® COLOUR]
ZEUS SPARKLE	[Colorcoat Prisma® COLOUR]
SEREN WHITE	[Colorcoat Prisma® COLOUR]
SEREN SILVER	[Colorcoat Prisma® COLOUR]
SEREN GOLD	[Colorcoat Prisma® COLOUR]
SEREN COPPER	[Colorcoat Prisma® COLOUR]
SEREN BLACK	[Colorcoat Prisma® COLOUR]

Colours may slightly deviate due to different monitors and prints compared to original colours. On request we will send you real metal sample.

\*Colorcoat Prisma and Seren are trademarks of Tata Steel UK Limited





External steel sheet is a hot dip galvanized thin steel sheet (according to EN10346) and pre-painted by »coil coat« technology. External sheets are available for different corrosion environments as defined for certain project.

Organic paint protections are available for environment corrosion classes up to C5, (according to classification in EN12944).

Trimo anti corrosion guarantees for wall application of special metallic and solid colours:

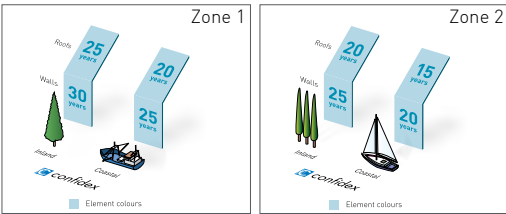
C5 = 12 years

C4 = 15 years

C3 = 25 years

Special guarantees terms and conditions apply when using Tata Steel Colorcoat Prisma® Element colours with the Confidex® Guarantee by Tata Steel being available.

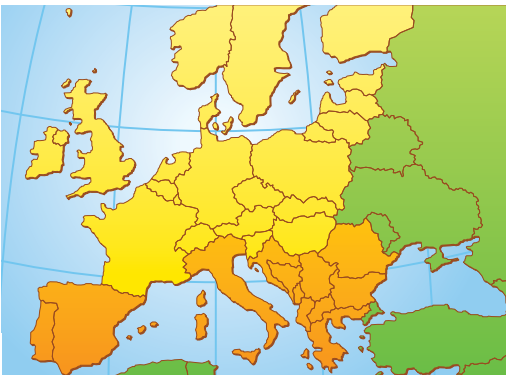
**Confidex® Guarantee for Colorcoat Prisma®**



**Notes**

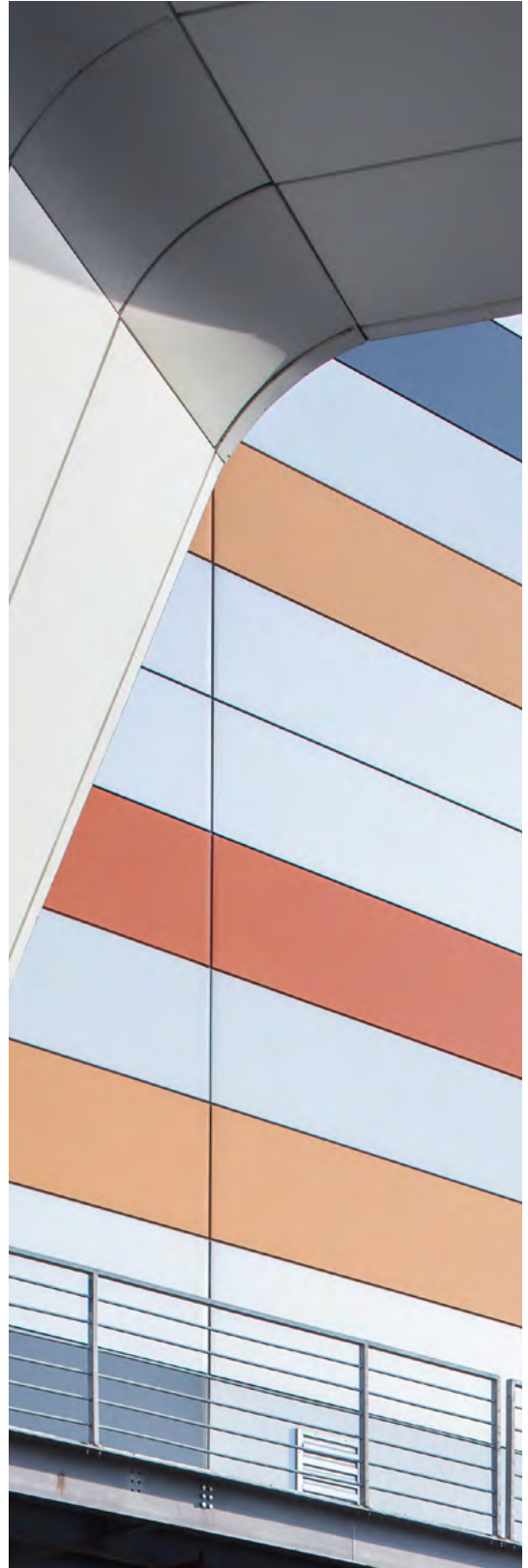
1. Figures under the Coastal heading are for buildings within 1 km of any coast.
2. Full terms and conditions of the Confidex® Guarantee are on the online application form, available at [www.colorcoat-online.com/registration](http://www.colorcoat-online.com/registration)
3. Confidex® must be registered within 3 months of the building completion date for the guarantee to be valid.
4. The Confidex® Guarantee periods on the diagram above are applicable to Zone 1 and Zone 2. For more information on other zones visit [www.colorcoat-online.com/confidexmap](http://www.colorcoat-online.com/confidexmap)

**Regions covered by the Confidex® Guarantee**



- Northern Europe - Zone 1
- Southern Europe - Zone 2
- For areas outside of Confidex® zones please contact Tata Steel for more information.

The standard guarantee for Qbiss modular façade elements is 10 (ten) years from the date of dispatch unless agreed otherwise.



# TRIMO

**TRIMO D.O.O.**

PRIJATELJEVA CESTA 12,  
8210 TREBNJE, SLOVENIA

T: +386 (0)7 34 60 200

F: +386 (0)7 34 60 127

QBISS@TRIMO-GROUP.COM

WWW.TRIMO-GROUP.COM



All information issued by Trimo Group is subject to continuous development and information/details contained on this media are current at date of issue. It is user`s responsibility to obtain most up-to-date information from Trimo when information/details are used for project. The last version of the document is available on: [www.trimo-group.com/en/trimo/downloads/brochures/](http://www.trimo-group.com/en/trimo/downloads/brochures/)